

FLORIDA-FRIENDLY LANDSCAPING™

A GRASS-ROOTS WATER QUALITY PROGRAM

Esen Momol, Gail Hansen, Don Rainey, CJ Bain,
John Bossart, Claire Lewis, and Jen Marvin

What is Florida-Friendly Landscaping™?

- 💧 Water issues in Florida
- 💧 Florida-Friendly Landscaping™ Programs
- 💧 Florida-Friendly Landscaping™ Legislation
- 💧 Florida-Friendly Landscaping™ Impact
- 💧 Success stories
- 💧 Summary

FFL Legislative Definition*

“quality landscapes that conserve water, protect the environment, are adaptable to local conditions, and are drought tolerant.”



*From Chapter. 373.185, Florida Statutes

FFL definition continued...

“Additional components include practices such as landscape planning and design, soil analysis, the appropriate use of solid waste compost, and proper maintenance.”



Florida Legislation

The participation of homeowners' associations and local governments is essential to the state's efforts in water conservation and water quality protection and restoration



*From Chapter. 373.185, Florida Statutes



Why Does FFL
matter?

“Planting the right plant in the right place...”



“efficient watering,



“appropriate fertilization, mulching,



“attraction of wildlife,



“responsible management of yard pests,



“recycling yard waste,



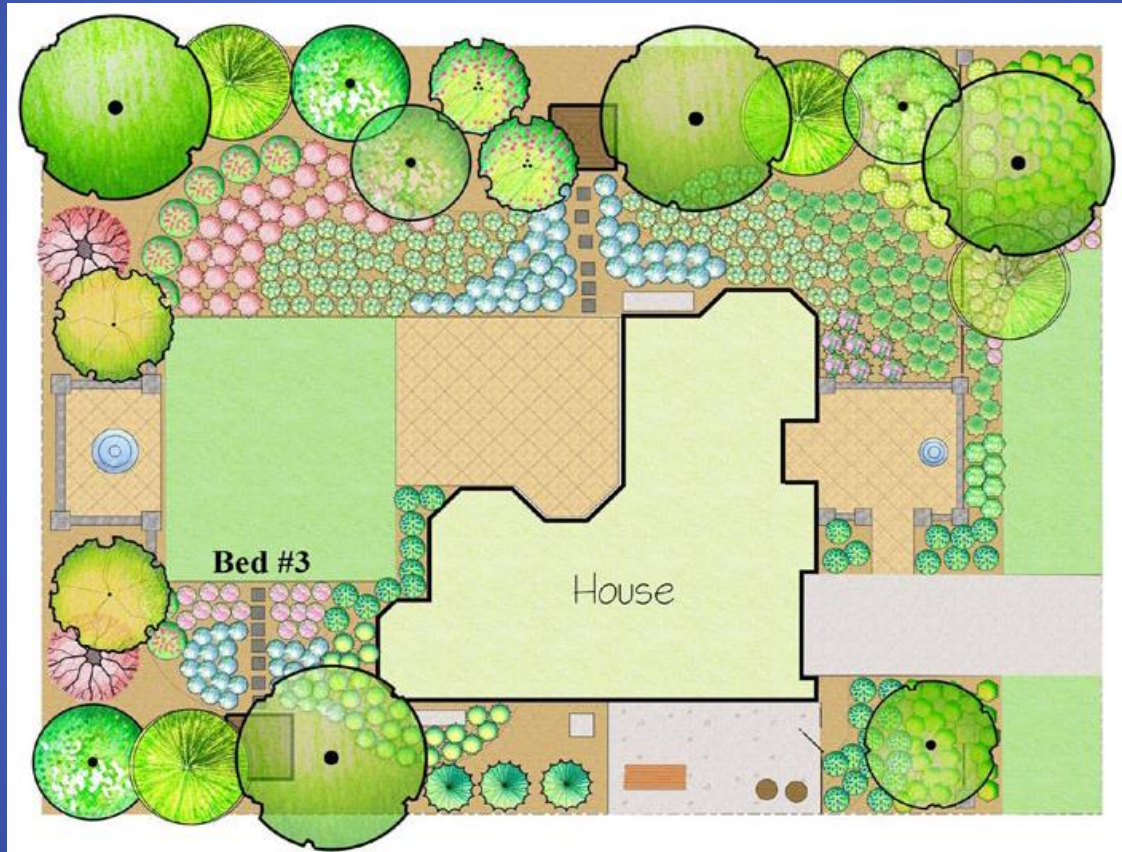
“reduction of stormwater runoff,



and waterfront protection.”



There is no one prescribed design for Florida-Friendly Landscaping™

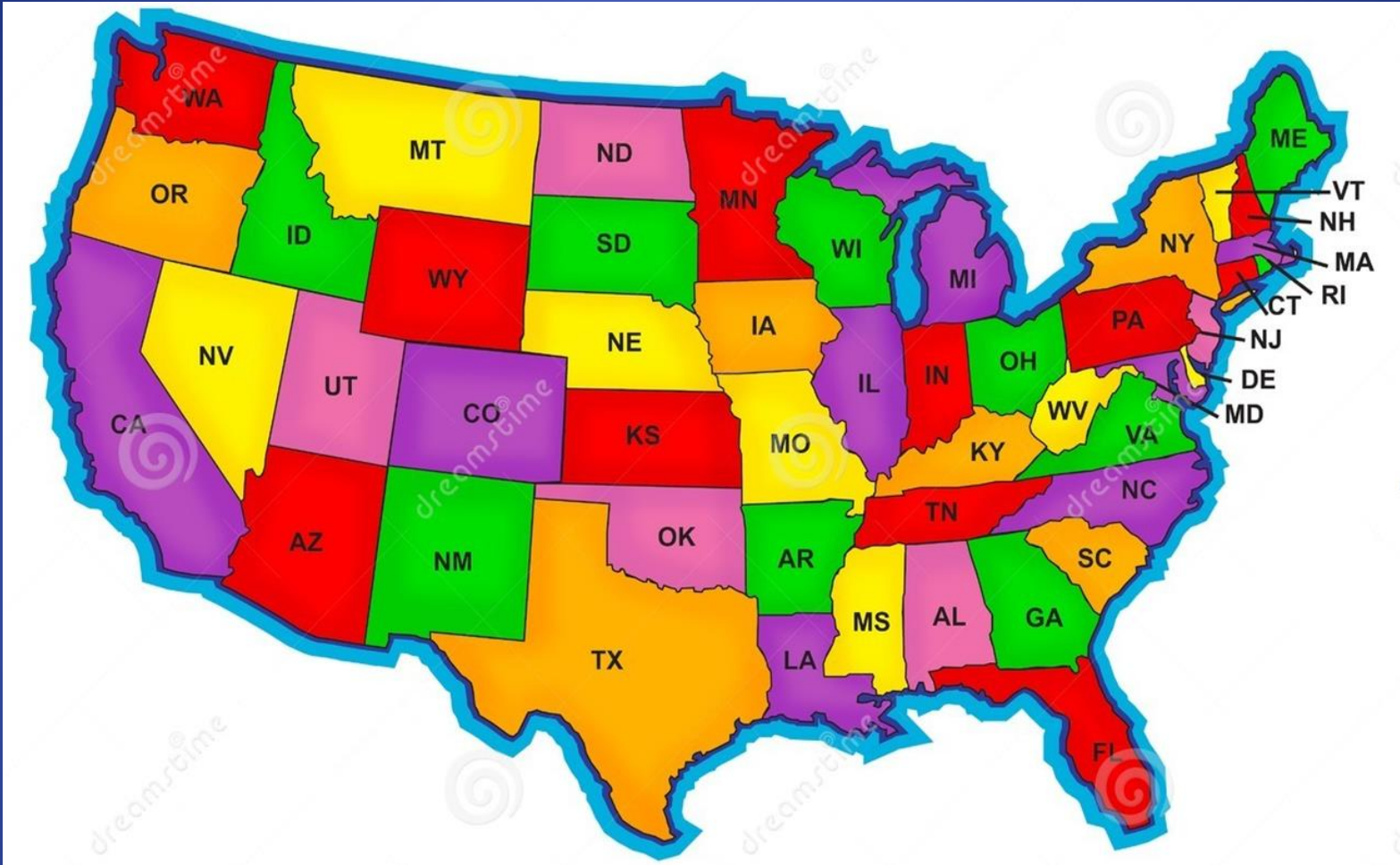


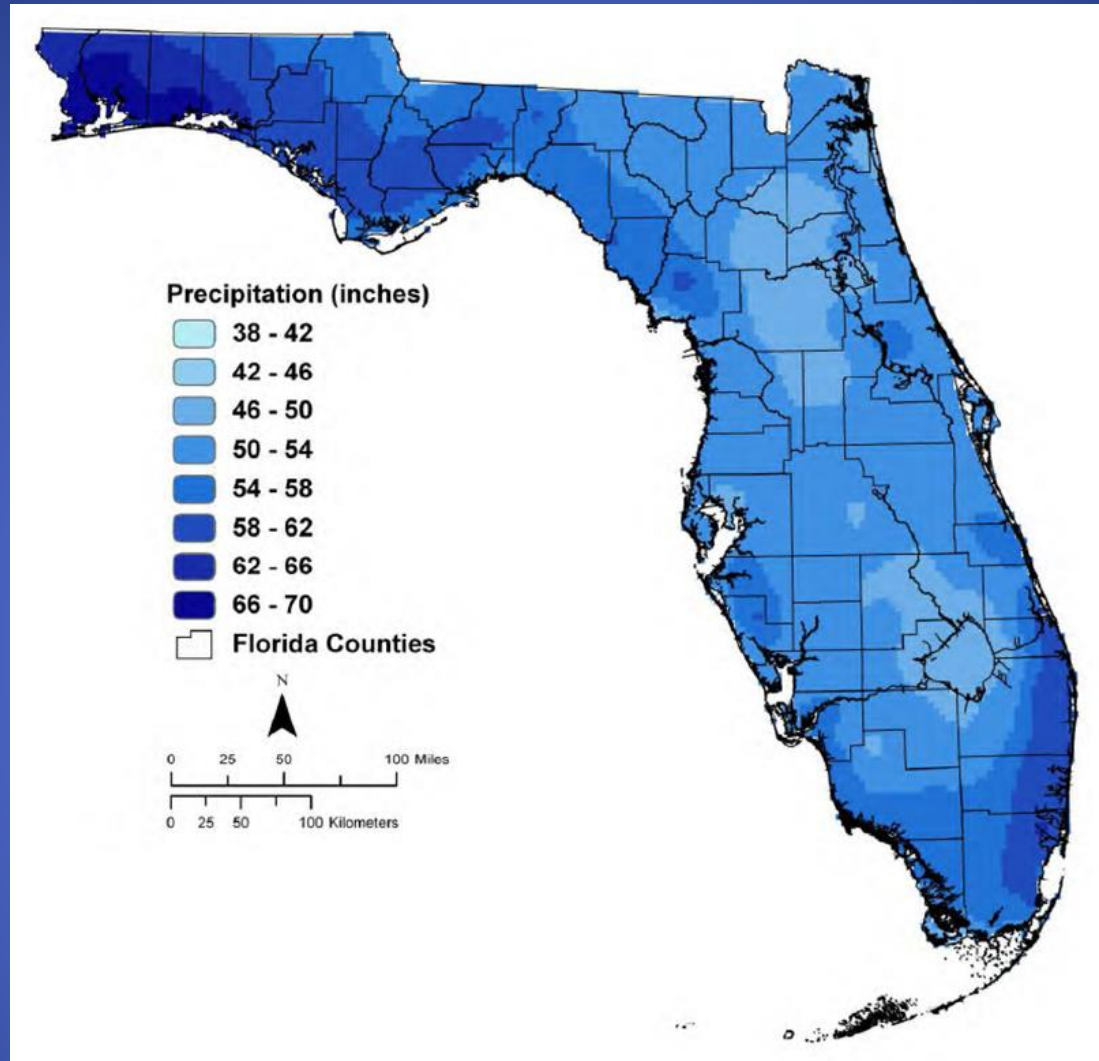
THIS IS NOT FFL



Water issues in Florida







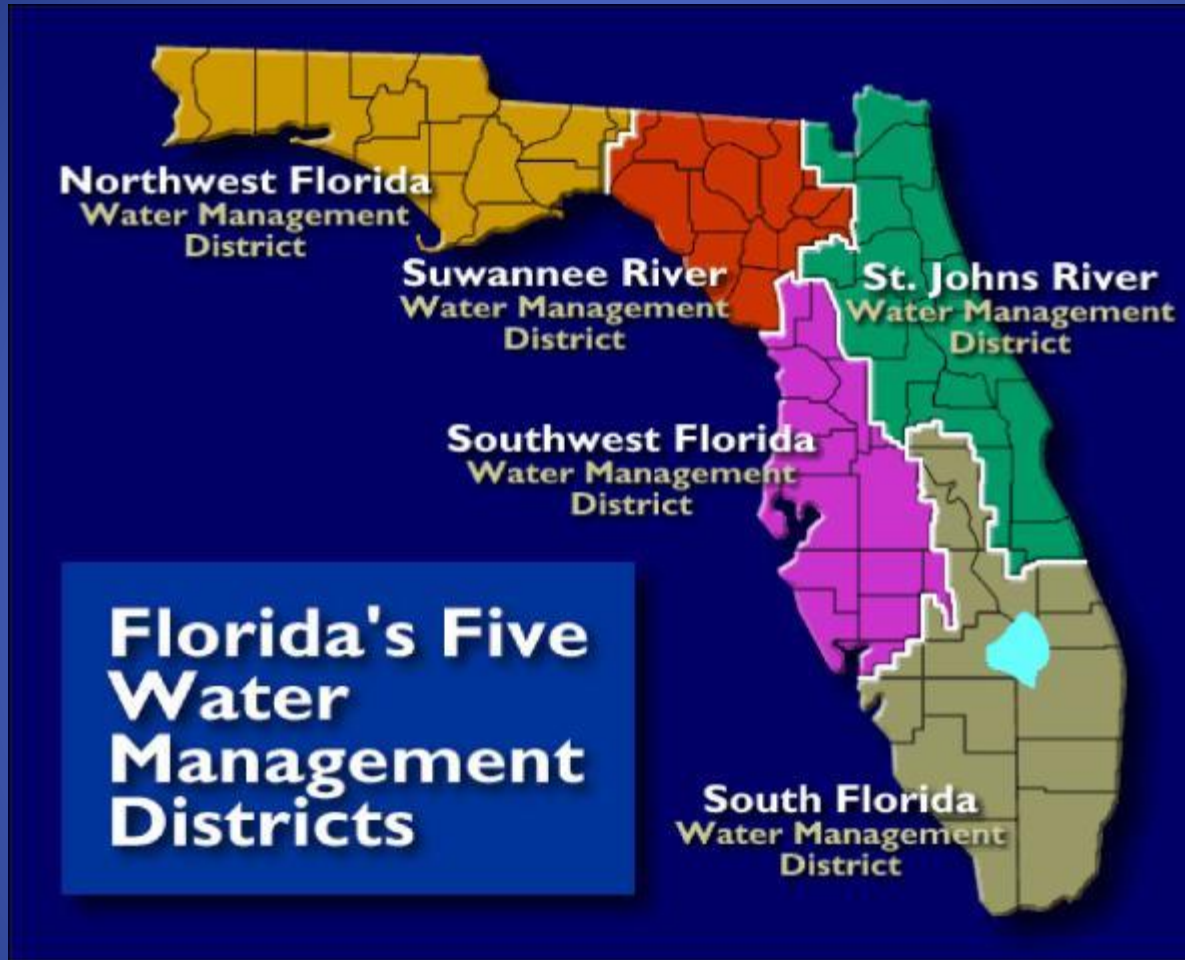
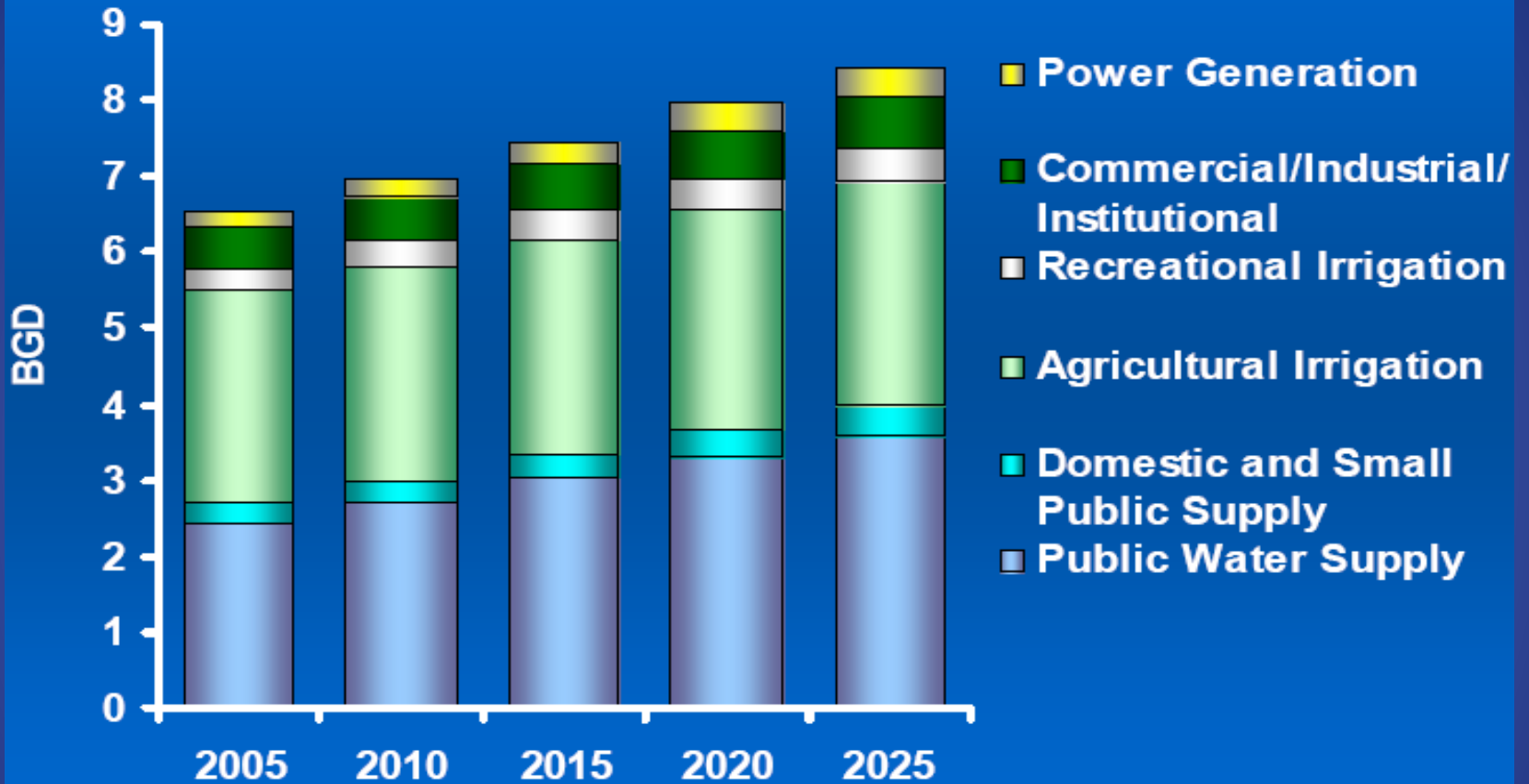


Figure 1. Statewide Fresh Water Demand Projections



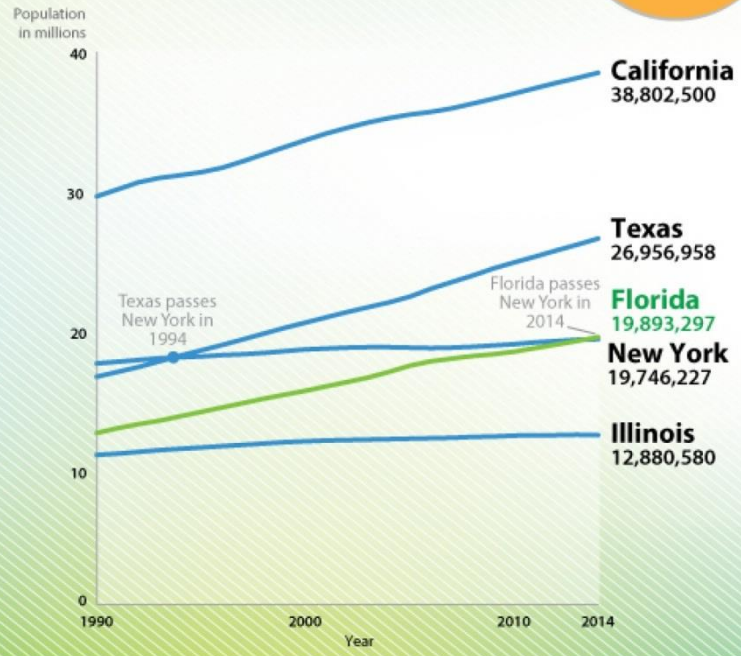
Source: Tapping New Source: Meeting 2025 Water Supply Needs, FDEP, March 2007



- 💧 **Approx. 50- 60% of homeowner water use is for lawn & landscape irrigation**
- 💧 **Improper water use has impacted the source of our drinking water and other ecosystems**



Florida Passes New York in State Population

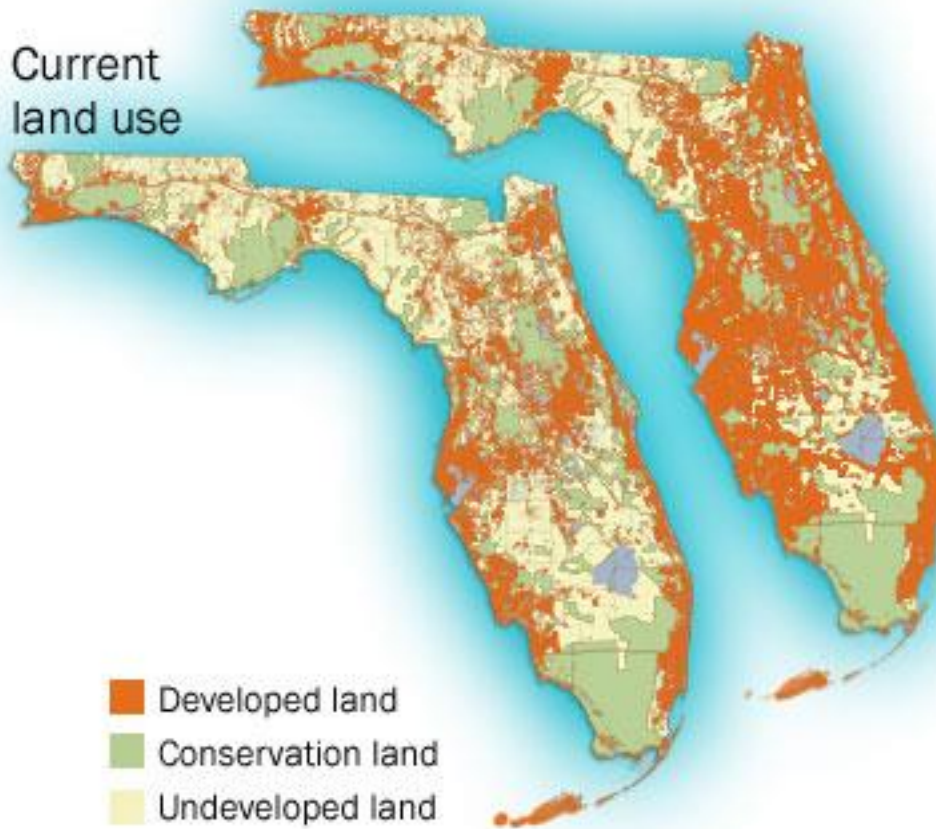


United States™ Census Bureau
U.S. Department of Commerce
Economics and Statistics Administration
U.S. CENSUS BUREAU
census.gov

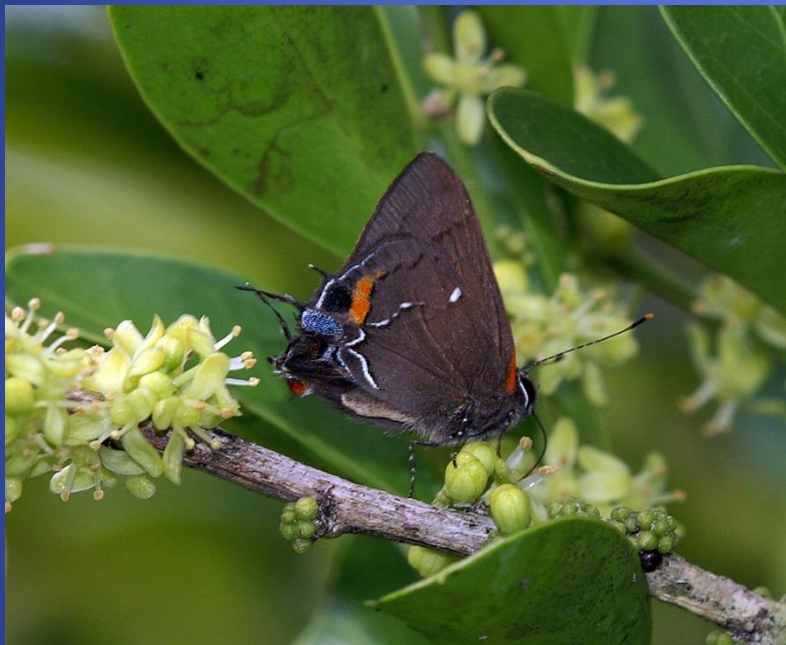
Source: Population Estimates, Decennial Censuses

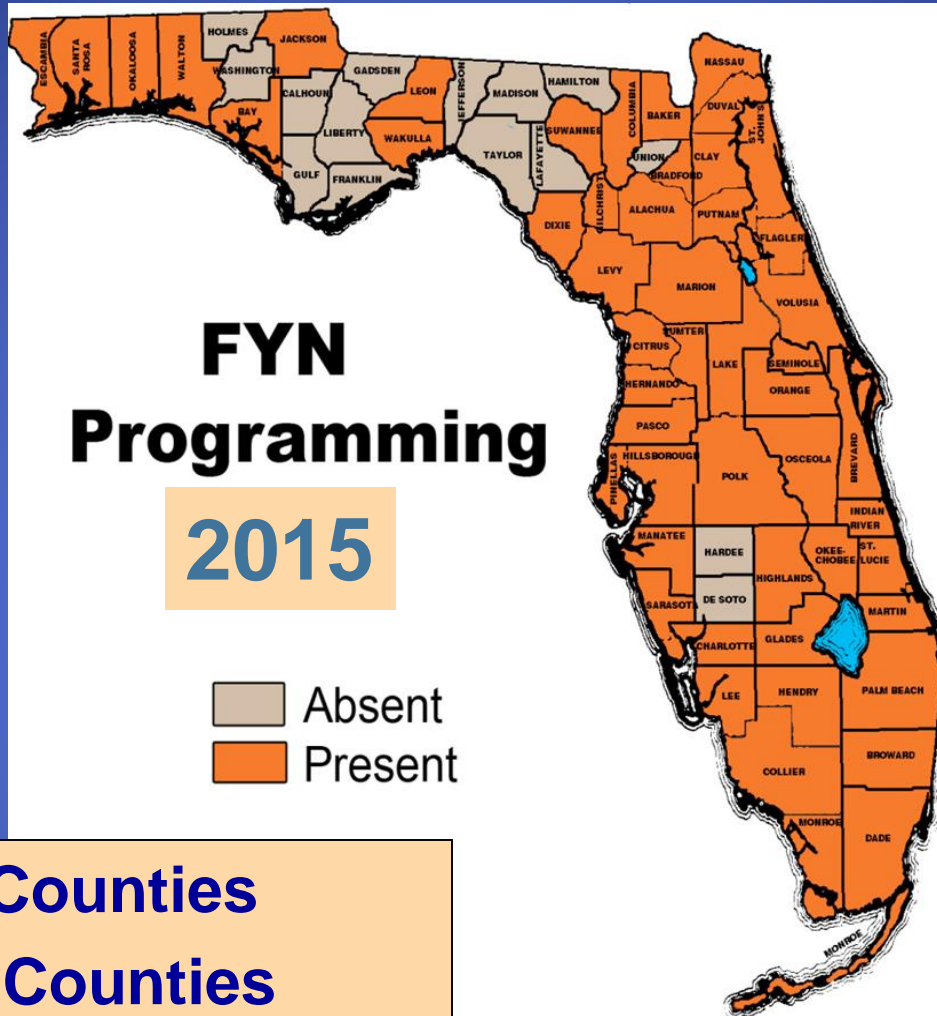
Projected land use in 2060

Current
land use



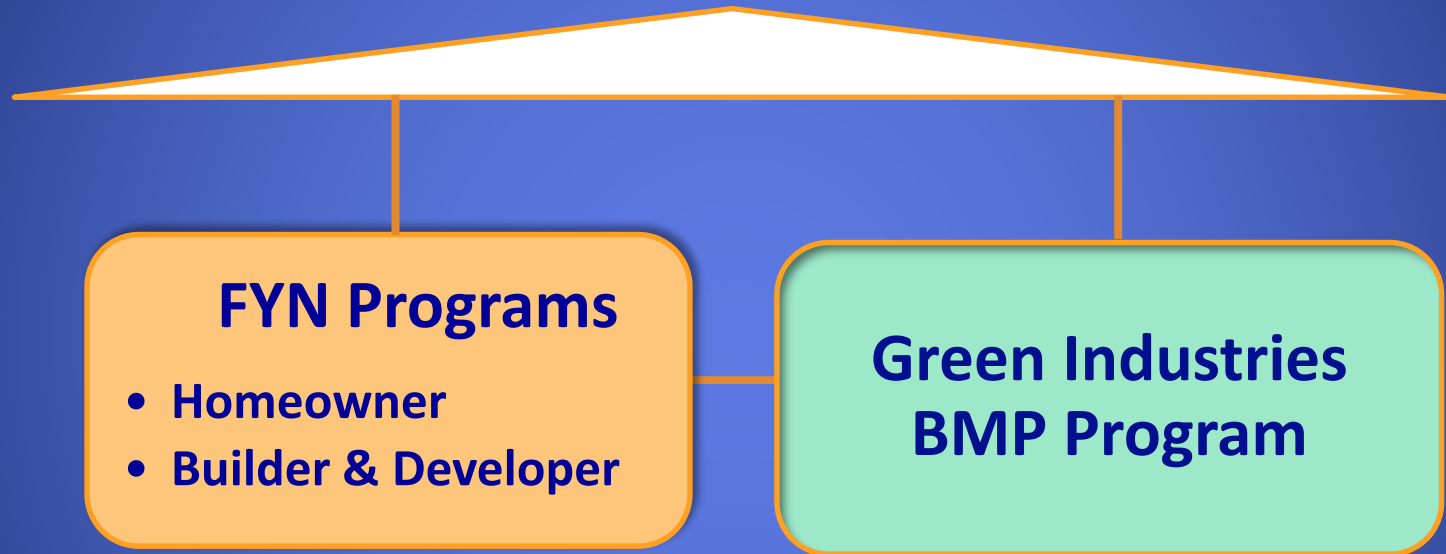
Florida-Friendly Landscaping™ Programs





💧 1994: 4 Counties
 💧 2015: 48 Counties

Florida-Friendly Landscaping™ Program



Florida-Friendly Landscaping™ Programs

FYN Homeowner

- Educate homeowners about how to design, install, and maintain Florida-Friendly Landscapes

FYN Builder & Developer

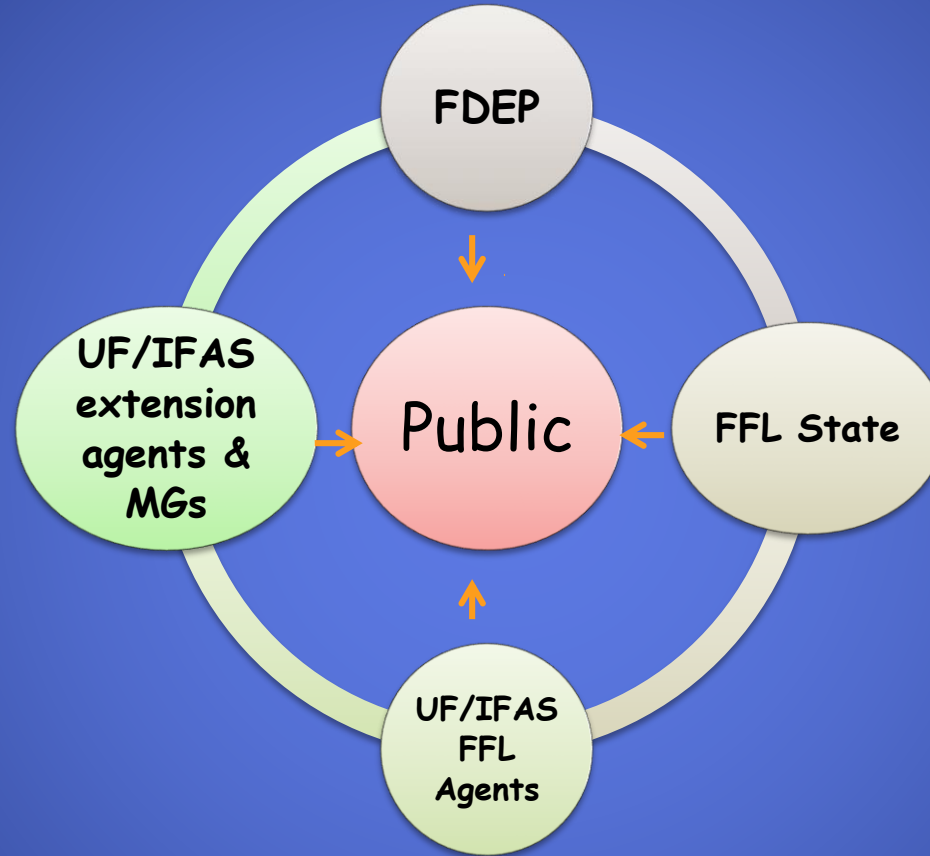
- Educate Builders & Developers, Landscape Architects, HOAs, Property Managers

GI-BMP

- Train and certify landscape professionals



Florida-Friendly Landscaping™ Program Implementation





Florida-Friendly Landscaping™

LEGISLATION



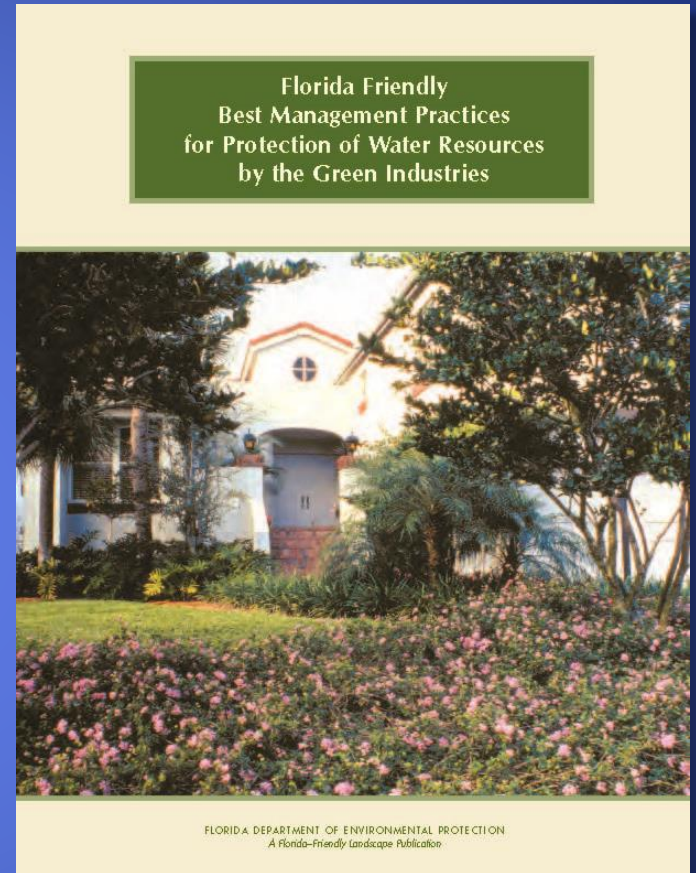
Chapter 482.1562, F.S. Limited certification for urban landscape commercial fertilizer application



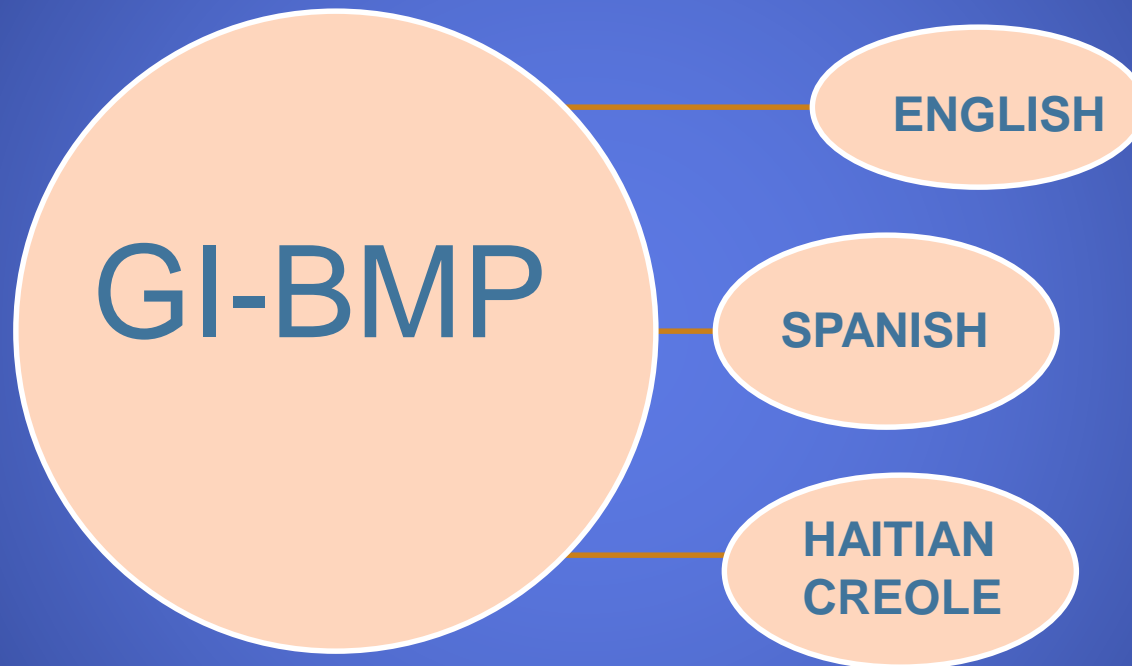
F.S. Section 403.933

(1) The FDEP, in cooperation with UF/IFAS, shall:

- (a) Provide training and testing programs in urban landscape best-management practices
- (b) issue certificates demonstrating satisfactory completion of the training.



GI-BMP Training



GI-BMP Training



Hire GI-BMP trained individuals!



GI-BMP TOTAL ATTENDANCE/CERTIFICATION

	Total Certified	Total Attended	Classes	Average Class Size
In-Person	29,509	35,713	1,489	24
Online*	4,395	4,524		
DVD	1,452	1,478		
Equivalent**	387			
Total	35,741	41,715		

Highlights of Chap. 373.185, F.S.

- 🔥 No longer references “Xeriscape”
- 🔥 Homeowner association (HOA) covenants, codes, and restrictions, local government ordinances may not prohibit any home owner to implement Florida- Friendly Landscaping™ practices



Highlights of Chap. 373.185, F.S.

- 💧 **Does NOT invalidate HOA architectural control and landscape committees**



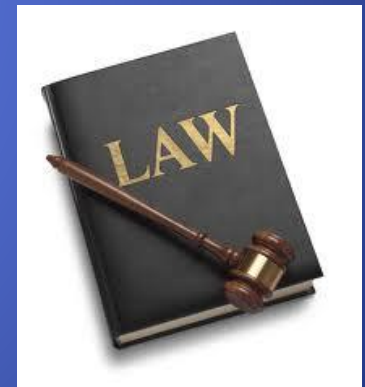
Highlights of Chap. 373.185, F.S.

- 🔥 Prohibits any watering mandates that violate water management district water use restrictions



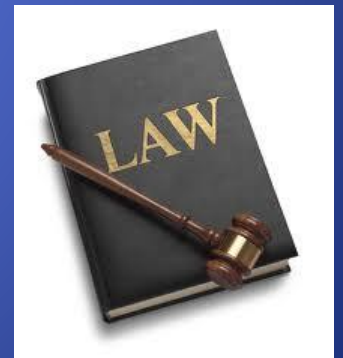
Homeowner Associations may not require:

- 💧 Water wasting practices
- 💧 “Wrong plant, wrong place”
- 💧 Excessive use of fertilizer/pesticides
- 💧 Violation of WMD water use restrictions



Homeowner Associations may not prohibit :

- 🔥 Homeowner from implementing FFL
- 🔥 Right Plant, Right Place
- 🔥 Reasonable use of mulch
- 🔥 Plants attractive to wildlife
- 🔥 Rain gardens, rain barrels, waterfront buffers



Florida-Friendly Landscaping™ Impact

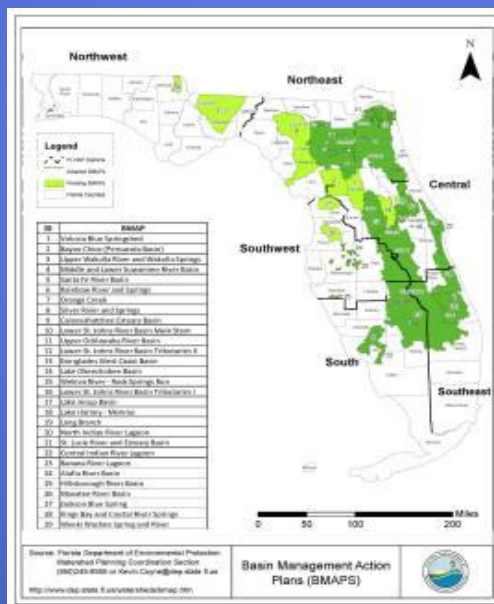
- 🔹 Florida Department of Environmental Protection Total Maximum Daily Load Program generates quantitative data on nutrient input and load reductions



Florida-Friendly Landscaping™ Impact

What is a BMAP?

A "blueprint" for restoring impaired waters by reducing pollutants to meet the allowable loadings established in a Total Maximum Daily Load (TMDL).

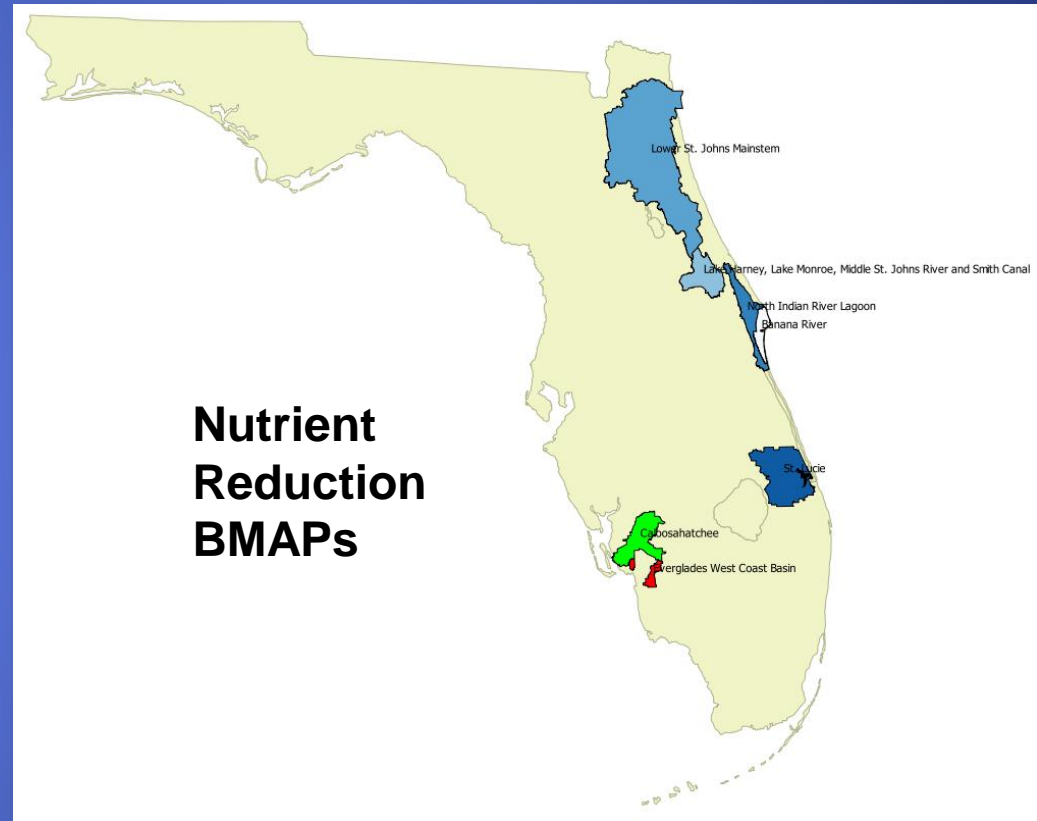


Florida-Friendly Landscaping™ Impact

- 💧 Many Basin Management Action Plans list **Florida-Friendly Landscaping™** as a load reduction project
- 💧 FFL receives credit for removing up to 3% of the nutrient load

Florida-Friendly Landscaping™ Impact

How many pounds of nutrients does FFL keep out of Florida's waterways?



Florida-Friendly Landscaping™ Impact

How many pounds of nutrients does the FFL keep out of FL's waterways?

Total Nitrogen (TN) Removal

<u>BMAP</u>	<u>Starting Load Total Nitrogen (lbs/yr)</u>	<u>FFL Load Reduction (lbs/yr)</u>
Lower SJR (Main Stem)	822,066	20,352
Caloosahatchee Estuary Basin	1,403,930	20,267
St. Lucie Estuary	344,492	8,139
North IRL	517,168	4,970
Harney, Monroe, MSJR, Smith Canal	146,449	4,025
Banana River Lagoon	148,431	2,491
Everglades West Coast Basin	186,149	1,918
		62,162 pounds/yr (28,100 kg/yr)

Cost Savings (@\$500/lb) = \$30,000,000

FFL Success stories

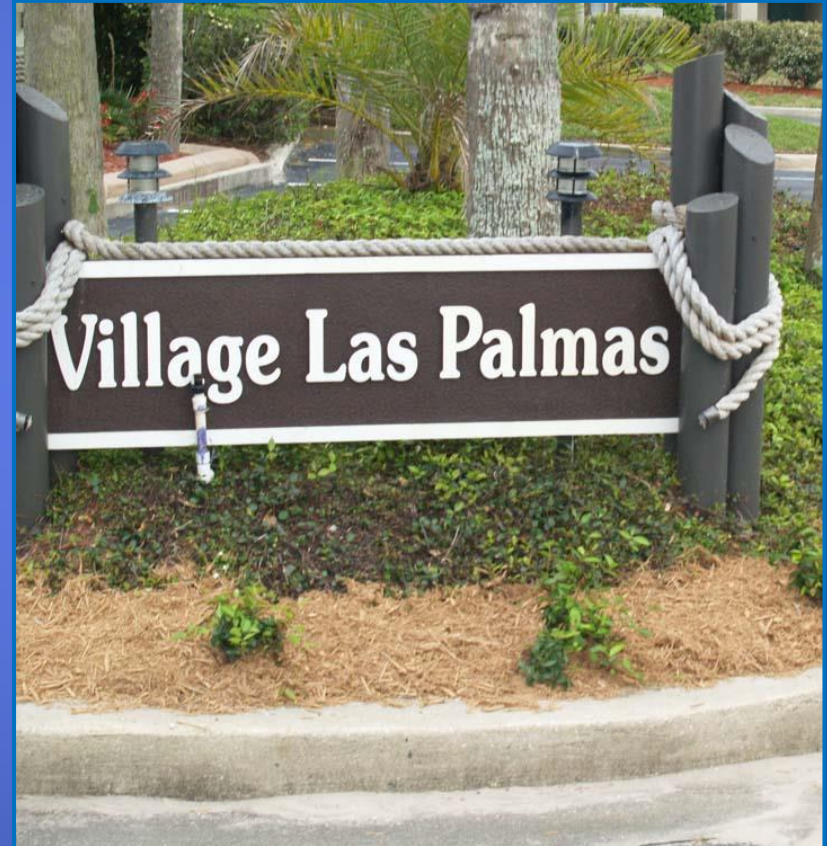


Ocean Gallery

St. Johns County (Condominiums)

- Replaced landscaping
- Capped irrigation heads
- Uses 10-million fewer gallons than five years ago
- Discontinued annual sod replacement (6 years)

\$20,240 total annual savings



Resource: *Creating Florida-Friendly Communities* e-newsletter

Link: http://fyn.ifas.ufl.edu/newsletter/CFFC_e-newsletter.htm

Tamarind Village

Broward County (HOA)

Annual Maintenance Savings

- saved \$16,000 on water bill
- saves \$13,000 a year on fertilizer
- saves \$5,000 a year on pesticides
- **\$33,000** annual savings



Before



After

Sumter County

Annuals were replaced with Florida-Friendly perennials

Prior to 2010 annual flower beds were installed 4X/year

Cost Savings = \$2,935/year



Summary

- 💧 FFL promotes science-based environmentally friendly landscape practices to prevent nonpoint source pollution, conserve water, and natural resources

- 💧 FFL saves water

Individual homeowner- 574,000 G/3yr

One subdivision irrigation - \$388,000

- 💧 FFL reduces nutrient leaching/runoff

62,000 pounds nitrogen

People are partners in water resources protection

